

PRODUCT: FUEL TANK SKID PLATE

APPLICATION: INEOS GRENADIER & QUARTERMASTER
(2023-Present)

PART NO: 2333.4506.1.6

UP-TO-DATE
MANUAL



CAUTION!

To reduce the risk of serious injury or damage to property: Before you start installing and using this product, read the full instructions, pay special attention to the conditions of safe use and recommendations for installation! When installing or maintaining this product, it is necessary to use protective goggles. Check the integrity of the installed components and torque all hardware every 250 miles (400 kms). Discontinue use if there is any damage to the structure or fasteners!

NOTICE

Skid plates are supplemental protection. We cannot guarantee protection against all possible damage from impacts. When driving, be careful of objects and terrain that may damage sensitive parts of the vehicle.

FUEL TANK SKID PLATE

RIVAL

Part number: 2333.4506.1.6

Suited to vehicle: Ineos Grenadier 3.0, 3.0D; AT; 4WD (2023-Present)
Ineos Grenadier Quartermaster 3.0, 3.0D; AT; 4WD (2023-Present)

Material: Aluminum / Steel



SAFETY NOTICE

- * The RIVAL skid plate is designed to complement the use and design of the specified vehicle under conditions underlined by the vehicle manufacturer.
- * While driving the vehicle at any speed, collision with another vehicle, animal or object must always be avoided.
- * Following any collision with another vehicle, animal or object, the RIVAL skid plate and the vehicle must be inspected by a specialized or suitably qualified vehicle technician for possible damage to the components and assemblies in order to confirm suitability for further use of the vehicle.
- * It is strongly recommended that you do not operate a vehicle with a damaged skid plate or its components. In the case of damage, please contact the nearest RIVAL dealer. A damaged vehicle or skid plate is extremely dangerous and should be avoided at all cost.

INSTALLATION NOTICE

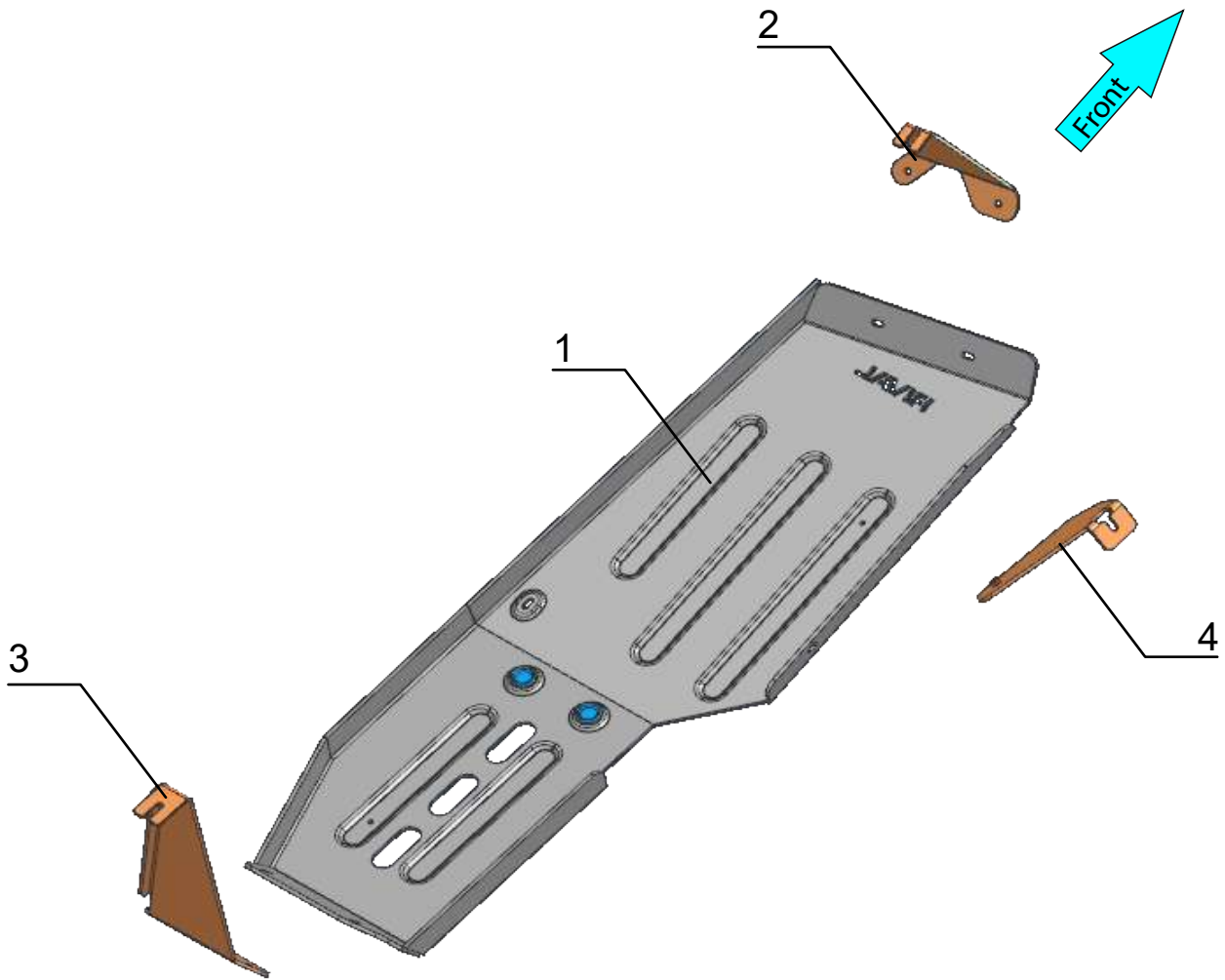
- * The RIVAL skid plate must be mounted to the vehicle according to this installation manual.
- * Personal safety during the installation process must be adhered to at all times.
- * Do not install this skid plate on vehicle models other than those listed in this manual.
- * We recommend using blue threadlocker on all hardware
- * Estimated time for installation: 1 hour.

REQUIRED TOOLS

- * Basic tool kit
- * Torque wrench

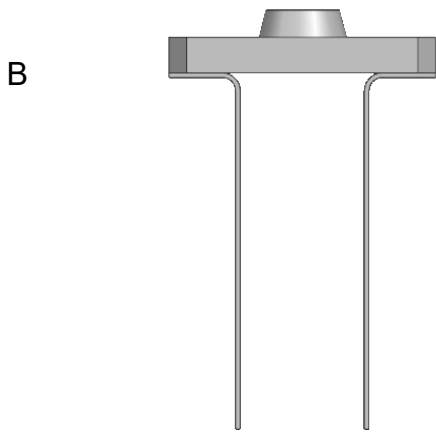
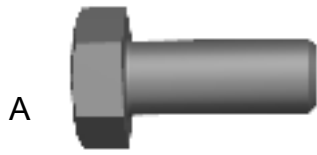
TORQUE SETTING

- * M8 - 24 Nm (17.7 lb/ft)



- 1. Skid plate.....Qty 1
- 2. Front bracketQty 1
- 3. Rear bracket.....Qty 1
- 4. Side bracket.....Qty 1

PARTS LISTING



- A. Bolt M8x25.....Qty 6
- B. Insert nut M8.....Qty 1
- C. Washer M8.....Qty 6

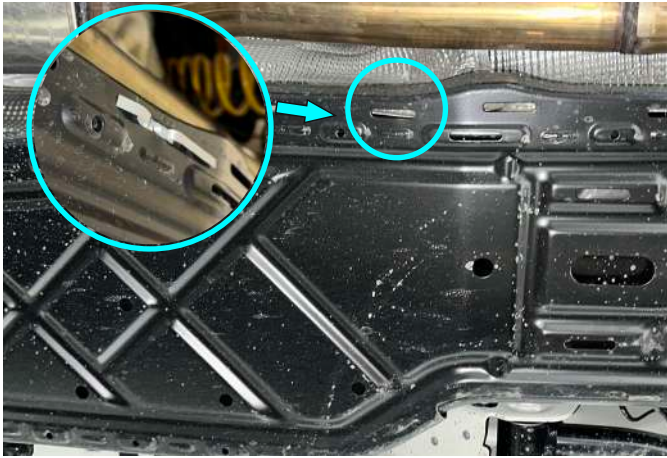


Fig. 1

1. Install M8 insert nut(item B) as shown in fig.1



Fig. 2

2. Loosen, but do not remove, front factory bolt as shown in fig. 2

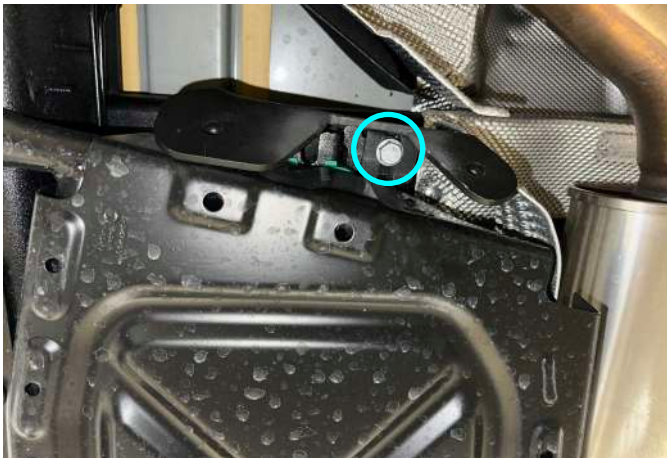


Fig. 3

3. Install the front bracket (item 2) by sliding it over the previously loosened bolt and loosely secure the factory bolt as shown in fig.3.

***Do not tighten yet.**

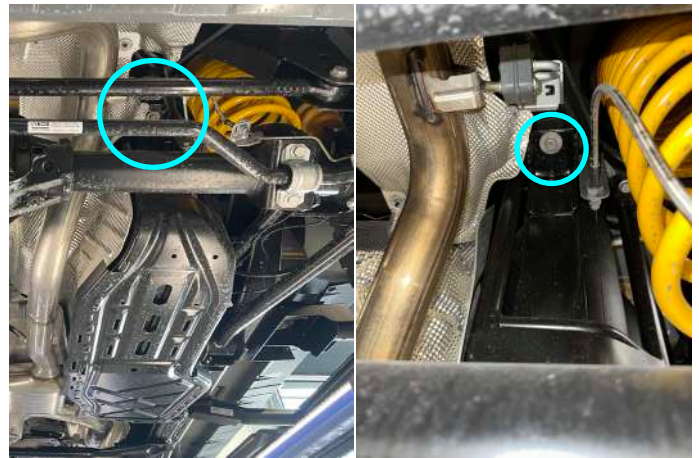


Fig. 4

4. Loosen, but do not remove, rear factory bolt as shown in fig.4



Fig. 5

5. Install the rear bracket (item 3) by sliding it over the previously loosened bolt and loosely secure the factory bolt as shown in fig.5.

***Do not tighten yet.**



Fig. 6

6. Loosen, but do not remove, factory side bolt as shown in fig.6



Fig. 7

7. Install the side bracket (item 4) by sliding it over the previously loosened bolt and loosely secure the factory bolt as shown in fig.7

***Do not tighten yet.**

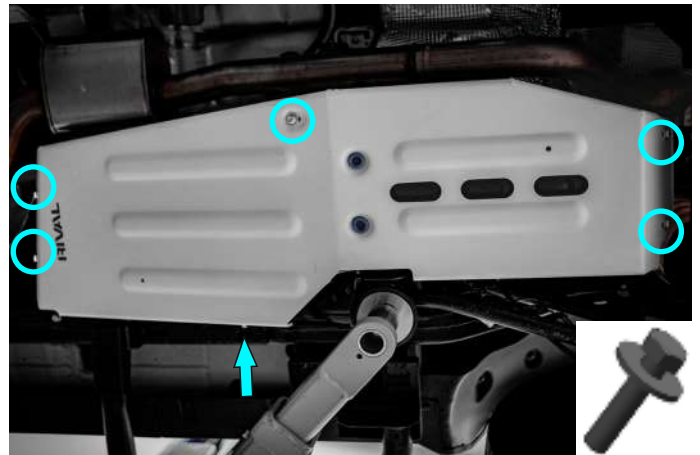


Fig. 8

8. Secure the fuel tank skid plate (item 1) to previously installed brackets using M8x25 bolts (item A) and M8 washers (item C) as shown in fig.8. It may be necessary to manipulate the brackets to line up the mounting holes.

***Torque all hardware.**

Before operating a vehicle fitted with RIVAL Skid Plate:

- Make sure all fittings are properly torqued.
- Ensure the integrity of the structure and its components.

